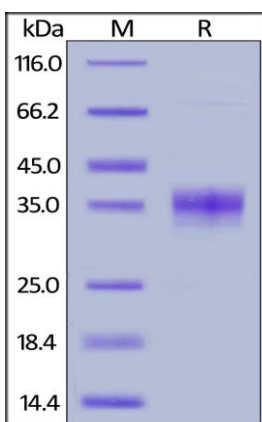
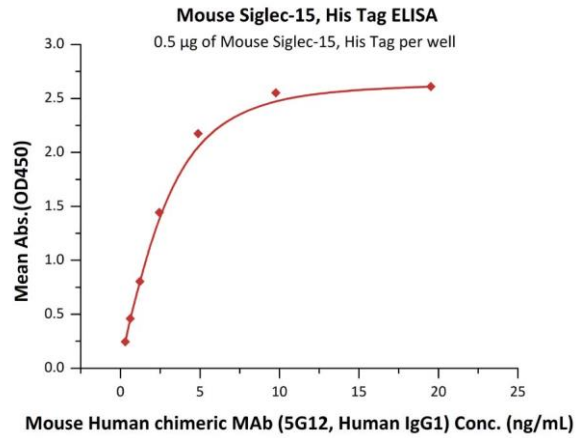


Human CellExp™ Siglec-15, Mouse Recombinant

CATALOG NO:	P1466-10 10 µg P1466-50 50 µg
ALTERNATE NAMES:	CD33 antigen-like 3, SIGLEC-15, CD33L3, sialic acid-binding Ig-like lectin 15, Siglec15, Siglec-15
MOL. WT.	This protein carries a polyhistidine tag at the C-terminus. The protein has a calculated MW of 27.5 kDa. The protein migrates as 33-40 kDa under reducing (R) condition (SDS-PAGE) due to glycosylation.
SOURCE:	HEK 293 cells
PURITY:	>90% SDS-PAGE
ENDOTOXIN:	Less than 1.0 EU per µg by the LAL method.
FORM:	Lyophilized
FORMULATION:	Lyophilized from 0.22 µm filtered solution in PBS with Arginine, pH7.4. Normally trehalose is added as protectant before lyophilization.
RECONSTITUTION:	Reconstitute in sterile deionized water to the desired protein concentration.
SPECIFIC ACTIVITY:	Immobilized Mouse Siglec-15 at 5 µg/mL (100 µL/well) can bind Mouse Human chimeric MAb with a linear range of 0.3-2 ng/mL
STORAGE CONDITIONS:	Store at -20°C. After reconstitution, aliquot and store at -80°C and use within 3 months. Avoid repeated freezing and thawing cycles. -20°C
DESCRIPTION:	Siglec-15 is a DAP12-associated immunoreceptor, which belongs to the immunoglobulin superfamily and SIGLEC (sialic acid binding Ig-like lectin) family. Siglecs are cell surface proteins that bind sialic acid. They are found primarily on the surface of immune cells and are a subset of the I-type lectins. Siglec-15 consisting of immunoglobulin (Ig)-like domains, transmembrane domain and a short cytoplasmic tail. Siglec-15 is that recognizes sialylated glycans and regulates osteoclast differentiation. Siglec-15 is a potential therapeutic target for osteoporosis and plays a conserved regulatory role in the immune system of vertebrates.
AMINO ACID SEQUENCE:	Arg 24 - Thr 262



Mouse Siglec-15, His Tag on SDS-PAGE under reducing (R) condition. The gel was stained overnight with Coomassie Blue. The purity of the protein is greater than 90%.



Immobilized Mouse Siglec-15 at 5 µg/mL (100 µL/well) can bind Mouse Human chimeric MAb with a linear range of 0.3-2 ng/mL

RELATED PRODUCTS:

- Human CellExp™ CD33/SIGLEC-3, human recombinant (7370)
- Human CellExp™ Siglec-15, Human Recombinant (P1343)
- Human CellExp™ CD33/SIGLEC-3, Fc Tag, Human Recombinant (P1334)
- Human CellExp™ Siglec-2/CD22 isoform beta, Human Recombinant (P1171)
- Human CellExp™ Siglec-2/CD22, Mouse Recombinant (P1330)
- Human CellExp™ Siglec-6/CD327 Protein, Fc Tag (7882)

FOR RESEARCH USE ONLY! Not to be used on humans.