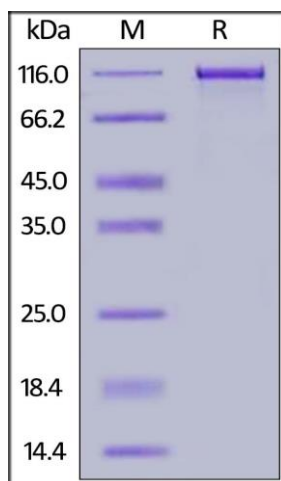
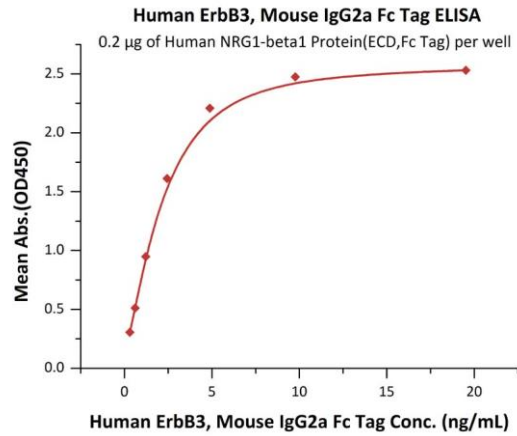


Human Cellxp™ Her3 / ErbB3, Fc Tag, Human Recombinant

CATALOG NO:	P1482-10 10 µg P1482-50 50 µg
ALTERNATE NAMES:	ERBB3, HER3, LCCS2, MDA-BF-1, MGC88033, c-erbB3, erbB3-S, p180-ErbB3, p45-sErbB3, p85-sErbB3
MOL. WT.	This protein carries a mouse IgG2a Fc tag at the C-terminus. The protein has a calculated MW of 95.5 kDa. The protein migrates as 115 kDa under reducing (R) condition (SDS-PAGE) due to glycosylation.
SOURCE:	HEK 293 cells
PURITY:	>90%
ENDOTOXIN:	Less than 1.0 EU per µg by the LAL method.
FORM:	Lyophilized
FORMULATION:	Lyophilized from 0.22 µm filtered solution in Tris with Glycine, Arginine and NaCl, pH7.5. Normally trehalose is added as protectant before lyophilization
RECONSTITUTION:	Reconstitute in sterile deionized water to the desired protein concentration.
SPECIFIC ACTIVITY:	Immobilized Human NRG1-beta1 Protein (ECD, Fc Tag) at 2 µg/mL (100 µL/well) can bind Human ErbB3, Mouse IgG2a Fc Tag with a linear range of 0.3-2 ng/mL
STORAGE CONDITIONS:	Store at -20°C. After reconstitution, aliquot and store at -80°C and use within 3 months. Avoid repeated freezing and thawing cycles
DESCRIPTION:	ErbB3, also known as Her3 (human epidermal growth factor receptor 3), is a member of the epidermal growth factor receptor (EGFR) family of receptor tyrosine kinases. This membrane-bound glycoprotein has a neuregulin binding domain but has not an active kinase domain. It therefore can bind the ligand but cannot mediate the intracellular signal transduction through protein phosphorylation. However, it does form heterodimers with ErbB2 or other EGFR members responsible for tyrosine phosphorylation to give a receptor complex and initiate the related pathway, which lead to cell proliferation or differentiation. Overexpression of this protein has been reported in numerous cancers, including prostate, bladder, and breast tumors. This protein has different isoforms derived from alternative splicing variants, and among which, the secreted isoform lacking the intermembrane region modulates the activity of membrane-bound form.
AMINO ACID SEQUENCE:	Ser 20 - Thr 643



Human ErbB3, Mouse IgG2a Fc Tag on SDS-PAGE under reducing (R) condition.



Immobilized Human NRG1-beta1 Protein (ECD, Fc Tag) at 2 µg/mL (100 µL/well) can bind Human ErbB3, Mouse IgG2a Fc Tag with a linear range of 0.3-2 ng/mL

RELATED PRODUCTS:

- EGF Receptor, human recombinant (7135)
- Human CellExp™ HER3 / ErbB3 Extracellular Domain (ED), Human Recombinant (7400)
- ErbB4/HER4 (His Tagged), Human Recombinant (7773)
- Human CellExp™ HER2/ErbB2, human recombinant (7397)
- Human CellExp™ HER1/ErbB1, human recombinant (7396)

FOR RESEARCH USE ONLY! Not to be used on humans.