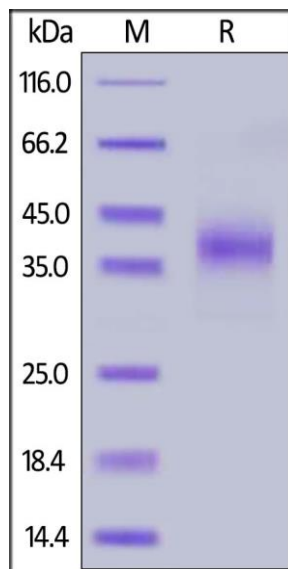


# Human CellExp™ NKp46 / NCR1 / CD335, Human Recombinant

<b>CATALOG NO:</b>	P1483-10 10 µg P1483-50 50 µg
<b>ALTERNATE NAMES:</b>	NCR1, LY94, CD335, NK-p46, hNKp46
<b>MOL. WT.</b>	This protein carries a polyhistidine tag at the C-terminus. The protein has a calculated MW of 28.3 kDa. The protein migrates as 36-43 kDa under reducing (R) condition (SDS-PAGE) due to glycosylation.
<b>SOURCE:</b>	HEK 293 cells
<b>PURITY:</b>	>90%
<b>FORM:</b>	Lyophilized
<b>FORMULATION:</b>	Lyophilized from 0.22 µm filtered solution in PBS, pH7.4. Normally trehalose is added as protectant before lyophilization.
<b>RECONSTITUTION:</b>	Reconstitute in sterile deionized water to the desired protein concentration.
<b>STORAGE CONDITIONS:</b>	Store at -20°C. After reconstitution, aliquot and store at -80°C and use within 3 months. Avoid repeated freezing and thawing cycles .
<b>DESCRIPTION:</b>	Natural cytotoxicity triggering receptor 1 (NCR1) is also known as Natural killer cell p46-related protein (NK-p46), Lymphocyte antigen 94 homolog (LY94), CD antigen CD335, which belongs to the natural cytotoxicity receptor (NCR) family. NCR1 contains two Ig-like (immunoglobulin-like) domains. NCR1 interacts with CD247 and FCER1G. NCR1 / CD335 may contribute to the increased efficiency of activated natural killer (NK) cells to mediate tumor cell lysis.
<b>AMINO ACID SEQUENCE:</b>	Gln 22 - Asn 254



Human NKp46, His Tag on SDS-PAGE under reducing (R) condition.

## RELATED PRODUCTS:

Human CellExp™ CD166/ ALCAM, human recombinant (7437)  
Human CellExp™ CD23, human recombinant (7435)  
Human CellExp™ CD244 / 2B4 / SLAMF4, human recombinant (7374)  
Human CellExp™ CD30 /TNFRSF8, Fc Tag, Human Recombinant (P1331)

**FOR RESEARCH USE ONLY! Not to be used on humans.**