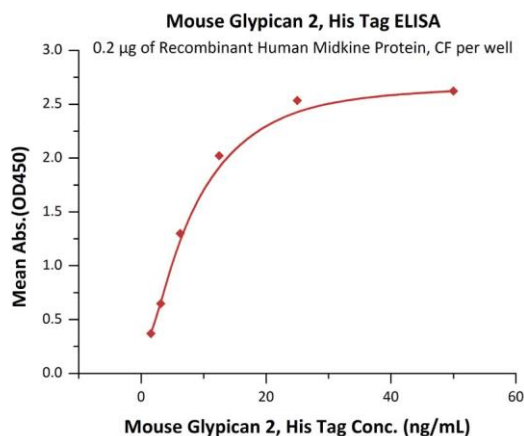
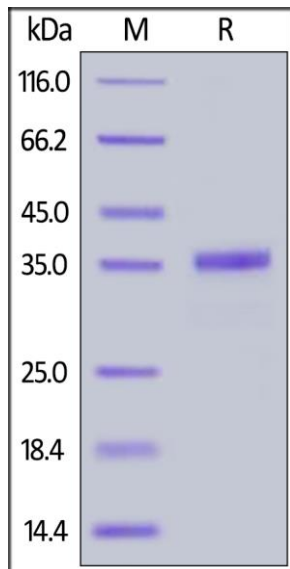


Human CellExp™ Glypican 2 / GPC2, Mouse Recombinant

CATALOG NO:	P1488-10 10 µg P1488-50 50 µg
ALTERNATE NAMES:	Glypican 2, GPC2
MOL. WT.	This protein carries a polyhistidine tag at the C-terminus. The protein has a calculated MW of 60.6 kDa. The protein migrates as 35-40 kDa under reducing (R) condition (SDS-PAGE).
SOURCE:	HEK 293 cells
PURITY:	>95%
ENDOTOXIN:	Less than 1.0 EU per µg by the LAL method.
FORM:	Lyophilized
FORMULATION:	Lyophilized from 0.22 µm filtered solution in PBS, pH7.4. Normally trehalose is added as protectant before lyophilization.
RECONSTITUTION:	Reconstitute in sterile deionized water to the desired protein concentration.
SPECIFIC ACTIVITY:	Immobilized Recombinant Human Midkine Protein, CF at 2 µg/mL (100 µL/well) can bind Mouse Glypican 2, His Tag with a linear range of 2-13 ng/mL
STORAGE CONDITIONS:	Store at -20°C. After reconstitution, aliquot and store at -80°C and use within 3 months. Avoid repeated freezing and thawing cycles -20°C
DESCRIPTION:	Glypican 2 (GPC2), also known cerebroglycan, is a glycoposphatidylinositol-linked integral membrane heparan sulfate proteoglycan found in the developing nervous system. Cerebroglycan participates in cell adhesion and is thought to regulate the growth and guidance of axons. Cerebroglycan has especially high affinity for laminin-1. GPC2 silencing inactivates Wnt/β-catenin signaling and reduces the expression of N-Myc, an oncogenic driver of neuroblastoma tumorigenesis. Immunotoxins and chimeric antigen receptor (CAR) T cells targeting GPC2 inhibit neuroblastoma growth in mouse models. A GPC3 specific antibody drug conjugate (ADC) can also inhibit neuroblastoma cell proliferation.
AMINO ACID SEQUENCE:	AA His 22 - Ser 556



Immobilized Recombinant Human Midkine Protein, CF at 2 µg/mL (100 µL/well) can bind Mouse Glypican 2, His Tag with a linear range of 2-13 ng/mL



Mouse Glypican 2, His Tag on SDS-PAGE under reducing (R) condition. The gel was stained overnight with Coomassie Blue. The purity of the protein is greater than 95%.

RELATED PRODUCTS:

- Human CellExp™ Glypican 3 / GPC3, Cynomolgus Recombinant (P1176)
- Human CellExp™ Glypican 3 / GPC3, Fc Tag, Human Recombinant (P1341)
- Human CellExp™ Glypican 3 / GPC3, Cynomolgus recombinant (P1119)
- Human CellExp™ Glypican 3 / GPC3, Human recombinant (P1057)
- Human CellExp™ Glypican 3 / GPC3, Mouse Recombinant (P1177)

FOR RESEARCH USE ONLY! Not to be used on humans.