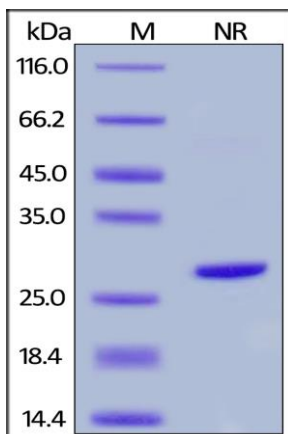


Human CellExp™ Complement Factor D, Human Recombinant

CATALOG NO:	P1491-10 10 µg
ALTERNATE NAMES:	CFD, Adipsin, PFD, DF, Complement factor D
MOL. WT.	This protein carries a polyhistidine tag at the C-terminus. The protein has a calculated MW of 26.3 kDa. The protein migrates as 28 kDa under non-reducing (NR) condition (SDS-PAGE) due to glycosylation.
SOURCE:	HEK 293 cells
PURITY:	>90%
ENDOTOXIN:	Less than 1.0 EU per µg by the LAL method.
FORM:	Lyophilized
FORMULATION:	Lyophilized from 0.22 µm filtered solution in 25 mM Tris, 75 mM NaCl, 5 mM CaCl ₂ , pH7.5. Normally glycerol is added as protectant before lyophilization.
RECONSTITUTION:	Reconstitute in sterile deionized water to the desired protein concentration.
STORAGE CONDITIONS:	Store at -20°C. After reconstitution, aliquot and store at -70°C and use within 3 months. Avoid repeated freezing and thawing cycles.
DESCRIPTION:	Complement factor D (CFD) is also known as Adipsin, C3 convertase activator, Properdin factor D (PFD), which contains one peptidase S1 domain and belongs to the peptidase S1 family. CFD / Adipsin cleaves factor B when the latter is complexed with factor C3b, activating the C3bbb complex, which then becomes the C3 convertase of the alternate pathway. CFD / Adipsin is a serine protease that stimulates glucose transport for triglyceride accumulation in fats cells and inhibits lipolysis. Defects in CFD / Adipsin are the cause of complement factor D deficiency which predisposes to invasive meningococcal disease.
AMINO ACID SEQUENCE:	AA Ile 26 - Ala 253



Human Complement Factor D, His Tag on SDS-PAGE under non-reducing (NR) condition. The gel was stained overnight with Coomassie Blue. The purity of the protein is greater than 90%.

RELATED PRODUCTS:

- Human CellExp™ Properdin, Human Recombinant (P1470)
- Adipsin Antibody (7937)
- Human CellExp™ Complement C5a , Mouse recombinant (P1427)

FOR RESEARCH USE ONLY! Not to be used on humans.