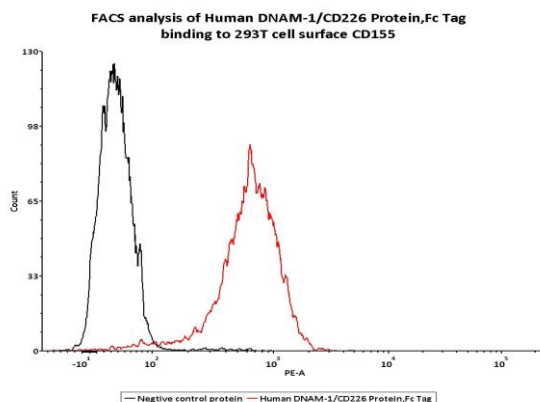
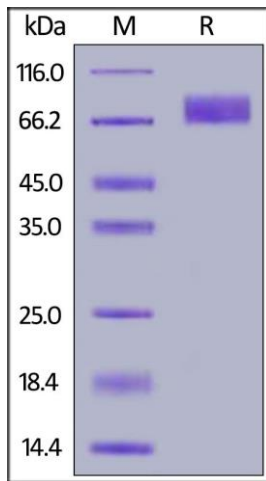


# Human CellExp™ DNAM-1 / CD226, Fc Tag, Human Recombinant

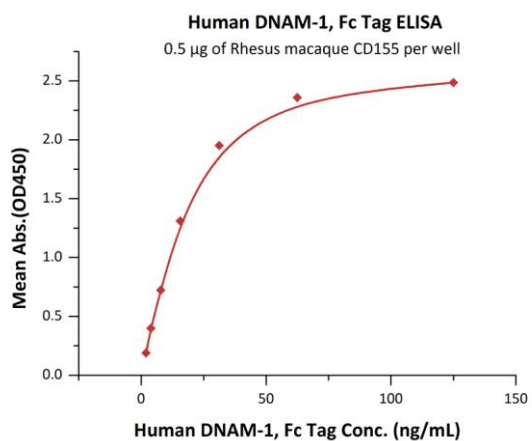
<b>CATALOG NO:</b>	P1494-10 10 µg P1494-50 50 µg
<b>ALTERNATE NAMES:</b>	DNAM1, CD226, PTA1
<b>MOL. WT.</b>	This protein carries a human IgG1 Fc tag at the C-terminus. The protein has a calculated MW of 52.6 kDa. The protein migrates as 66-90 kDa under reducing (R) condition (SDS-PAGE) due to glycosylation.
<b>SOURCE:</b>	HEK 293 cells
<b>PURITY:</b>	>95% SDS-PAGE
<b>ENDOTOXIN:</b>	Less than 1.0 EU per µg by the LAL method.
<b>FORM:</b>	Lyophilized
<b>FORMULATION:</b>	Lyophilized from 0.22 µm filtered solution in Tris with Glycine, Arginine and NaCl, pH7.5. Normally trehalose is added as protectant before lyophilization.
<b>RECONSTITUTION:</b>	Reconstitute in sterile deionized water to the desired protein concentration.
<b>SPECIFIC ACTIVITY:</b>	Immobilized Rhesus macaque CD155 at 5 µg/mL (100 µL/well) can bind Human DNAM-1, Fc Tag with a linear range of 2-31 ng/mL
<b>STORAGE CONDITIONS:</b>	Store at -20°C. After reconstitution, aliquot and store at -80°C and use within 3 months. Avoid repeated freezing and thawing cycles
<b>DESCRIPTION:</b>	DNAM accessory molecule 1 (DNAM-1), a single-pass type I membrane protein, is also known as CD226 antigen and platelet and T cell activation antigen 1 (PTA1), which contains 2 Ig-like C2-type (immunoglobulin-like) domains. DNAM-1 is a ~65 kDa glycoprotein expressed on the surface of natural killer cells, platelets, monocytes and a subset of T cells. DNAM-1 mediates cellular adhesion to other cells bearing its ligands, CD112 and CD155, and cross-linking DNAM-1 with antibodies causes cellular activation. Furthermore, DNAM-1 can interact with PVR and PVRL2.
<b>AMINO ACID SEQUENCE:</b>	AA Glu 19 - Asn 247



FACS assay shows that recombinant Human DNAM-1 Protein, Fc Tag can bind to 293T cell overexpressing human CD155. The concentration of DNAM-1 used is 0.03 µg/ml



Human DNAM-1, Fc Tag on SDS-PAGE under reducing (R) condition. The gel was stained overnight with Coomassie Blue. The purity of the protein is greater than 95%.



Immobilized Rhesus macaque CD155 at 5 µg/mL (100 µL/well) can bind Human DNAM-1, Fc Tag with a linear range of 2-31 ng/mL

**RELATED PRODUCTS:**

- CD226, human recombinant (7310)
- CD226 (Human) ELISA Kit (E4544)

**FOR RESEARCH USE ONLY! Not to be used on humans.**