

Human CellExp™ CD300c / LMIR2, Human Recombinant

CATALOG NO: P1496-10 10 µg
P1496-50 50 µg

ALTERNATE NAMES: CD300C, CLM-6, CMRF35-A1, CMRF-35, CMRF35A, IGSF16

MOL. WT. This protein carries a polyhistidine tag at the C-terminus. The protein has a calculated MW of 18.7 kDa. The protein migrates as 25-45 kDa under reducing (R) condition (SDS-PAGE) due to glycosylation.

SOURCE: HEK 293 cells

PURITY: >95% SDS-PAGE

ENDOTOXIN: Less than 1.0 EU per µg by the LAL method.

FORM: Lyophilized

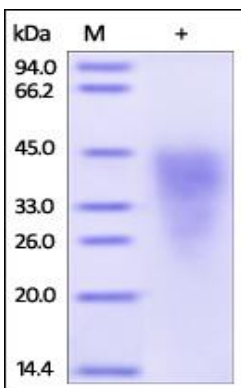
FORMULATION: Lyophilized from 0.22 µm filtered solution in PBS, pH7.4. Normally trehalose is added as protectant before lyophilization.

RECONSTITUTION: Reconstitute in sterile deionized water to the desired protein concentration.

STORAGE CONDITIONS: Store at -20°C. After reconstitution, aliquot and store at -80°C and use within 3 months. Avoid repeated freezing and thawing cycles .

DESCRIPTION: CMRF35-like molecule 6 (CLM-6) is also known as CD300 antigen-like family member C, CMRF35-A1, Immunoglobulin superfamily member 16 (IgSF16) , CD antigen CD300c, which belongs to the CD300 family. CLM-6 contains one Ig-like V-type (immunoglobulin-like) domain. CD300a/c RNA and surface expression were downregulated after stimulation of plasmacytoid dendritic cells (pDCs) with TLR7 and TLR9 ligands. Exogenous interferon (IFN)-alpha down-regulated CD300a/c expression. CD300a and CD300c play an important role in the cross-regulation of TNF-alpha and IFN-alpha secretion from pDCs. CD300a and CD300c are indistinguishable on the surface of NK cells.

AMINO ACID SEQUENCE: AA Gly 21 - Arg 183



Human CD300c, His Tag on SDS-PAGE under reducing (R) condition. The gel was stained overnight with Coomassie Blue. The purity of the protein is greater than 95%.

RELATED PRODUCTS:

- CD226, human recombinant (7310)
- CD200, human recombinant (7309)
- CD274, mouse recombinant (7311)
- CD300C, human recombinant (7312)

FOR RESEARCH USE ONLY! Not to be used on humans.