

# Recombinant SARS-CoV-2 Spike Protein S1 (Fc tag)

**CATALOG NO:** P1541-10 10 µg  
P1541-50 50 µg

**ALTERNATE NAMES:** S1 protein, Spike glycoprotein Subunit1, S glycoprotein Subunit1, Spike protein S1, novel coronavirus s1 Protein

**SOURCE:** CHO Cells

**PURITY:** >85% SDS-PAGE

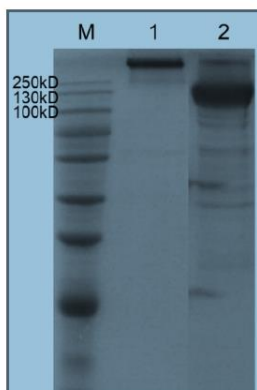
**FORM:** Liquid

**FORMULATION:** Supplied in PBS.

**STORAGE CONDITIONS:** Store at 2-8°C for short Term (<1 weeks). For long term storage, aliquot, and store at -20°C. Avoid repeated freezing and thawing.

**DESCRIPTION:** SARS-CoV is an enveloped, single and positive-stranded RNA virus. Cell entry of severe acute respiratory syndrome coronavirus (SARS-CoV) is mediated by the viral spike (S) protein. The spike (S) glycoprotein of coronaviruses is known to be essential in the binding of the virus to the host cell at the advent of the infection process. The spike protein is a large type I transmembrane protein containing two subunits, S1 and S2. For viral entry, the surface unit (S1) of SARS S binds to the cellular receptor angiotensin-converting enzyme 2 (ACE2) and the transmembrane unit (S2) then fuses the viral membrane with a host cell membrane. The S protein plays key parts in the induction of neutralizing-antibody and T-cell responses, as well as protective immunity, during infection with SARS-CoV. Because the S protein of SARS-CoV is involved in receptor recognition, as well as virus attachment and entry, it represents one of the most important targets for the development of SARS vaccines and therapeutics.

**AMINO ACID SEQUENCE:** Full length SARS CoV 2 Spike Protein (S1) with human IgG1 Fc fused at C terminus.



**Recombinant SARS-CoV-2 Spike Protein (Fc tag)**

## RELATED PRODUCTS:

- Human CellExp™ Coronavirus Spike Protein (SARS-CoV-2; S2), Recombinant (P1525)
- Human CellExp™ SARS-CoV-2 Spike Protein (S1), Recombinant (P1531)
- Recombinant SARS-CoV-2 Spike Protein S1 (His-tag) (P1540)
- Recombinant Coronavirus Spike Protein (SARS-CoV S2; 408-470, 540-573, His Tag) (P1517)
- Recombinant Coronavirus Spike Protein (SARS-CoV-2; S1; His-tag) (P1532)
- Recombinant Coronavirus Spike Protein (SARS-CoV S1; 1-53, 90-115, 171-205, His tag) (P1516)
- Human CellExp™ Coronavirus Spike Protein (SARS-CoV-2; S1), Recombinant (P1524)
- Recombinant Coronavirus Spike Protein (SARS-CoV S2; 408-470, 540-573) (P1518)
- Recombinant Coronavirus Spike Protein (SARS-CoV-2; His tag) (P1528)

**FOR RESEARCH USE ONLY! Not to be used on humans.**