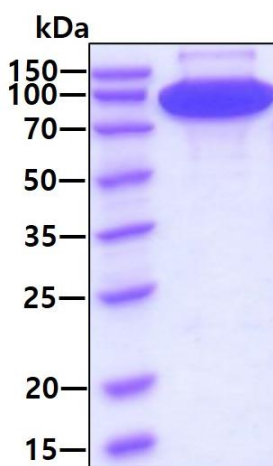


LRIG1, Mouse Recombinant

CATALOG NO:	P1557-10 10 µg P1557-50 50 µg
ALTERNATE NAMES:	LIG-1, LIG1, leucine-rich repeats and immunoglobulin like domains 1, leucine rich repeats and immunoglobulin like domains 1
MOL. WT.	84.8 kDa (His-tag at C terminus)
SOURCE:	Baculovirus
PURITY:	>90% SDS - PAGE
ENDOTOXIN:	< 1 EU per 1 ug of protein (determined by LAL method)
FORM:	Liquid
FORMULATION:	In Phosphate-Buffered Saline (pH 7.4) containing 10% glycerol
CONCENTRATION:	0.5 mg/ml (determined by Bradford assay)
STORAGE CONDITIONS:	Store at 4°C for 1 week. For long term storage, aliquot and store at -20°C to -80°C. Avoid repeated freezing and thawing cycles.
DESCRIPTION:	LRIG1, also known as leucine-rich repeats and immunoglobulin-like domains 1 is a pan-negative regulator of the epidermal growth factor receptor (EGFR) signaling pathway. In studies with ErbB family members and Met kinase, LRIG regulates signaling by increasing ubiquitination and lysosomal degradation of the receptors. It functions as a tumor suppressor by controlling cell proliferation through the negative regulation of the EGF family of receptor tyrosine kinases. This protein expression, which is often dysregulated in human cancers, is a prognostic indicator of cancer development and relapse. Recombinant mouse LRIG1, fused to His-tag at C terminus, was expressed in insect cell and purified by using conventional chromatography techniques.
AMINO ACID SEQUENCE:	770 aa (aa 35-796)



3 µg by SDS-PAGE under reducing condition and stained by coomassie blue stain

RELATED PRODUCTS:

- Epidermal Growth Factor (EGF), human recombinant (4022)
- EGF, murine recombinant (4023)
- Heregulin-β2 (HRG2β), Human Recombinant (4730)
- HB-EGF, human recombinant (4266)

FOR RESEARCH USE ONLY! Not to be used on humans.