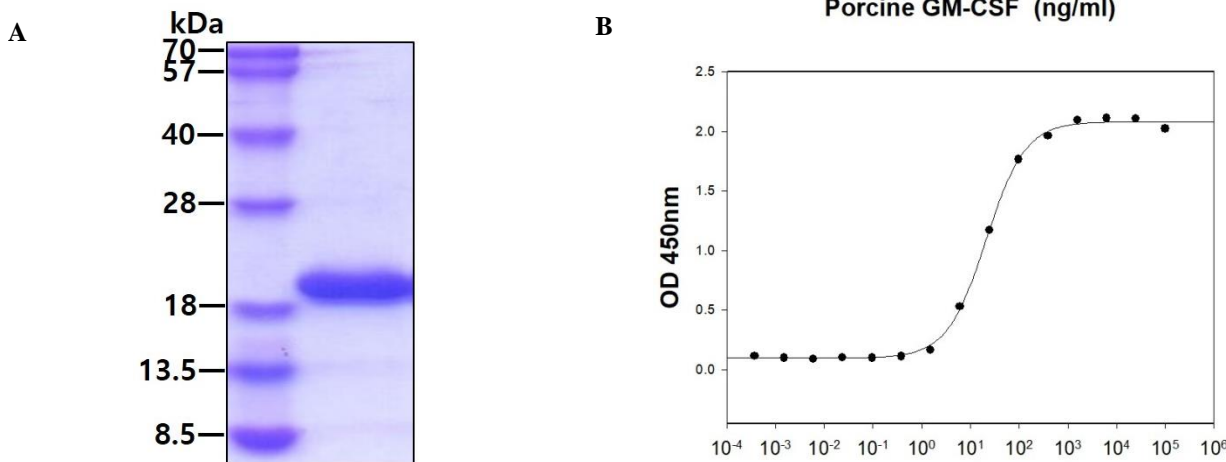


GM-CSF, Porcine Recombinant

CATALOG NO:	P1561-10 10 µg P1561-50 50 µg
ALTERNATE NAMES:	Colony stimulating factor, Colony Stimulating Factor 2, Colony stimulating factor 2 (granulocyte-macrophage), Colony-stimulating factor, CSF, CSF 2, CSF2, CSF2_HUMAN, GM-CSF, GMCSF
MOL. WT.	16.6 kDa (His tag at N-terminal)
SOURCE:	E. coli
PURITY:	>95% SDS - PAGE
ENDOTOXIN:	< 1 EU per 1ug of protein (determined by LAL method)
FORM:	Liquid
FORMULATION:	In Phosphate-Buffered Saline (pH7.4)
SPECIFIC ACTIVITY:	Measured in a cell proliferation assay using TF-1 human erythroleukemic cells. The ED ₅₀ range ≤ 40 ng/ml.
STORAGE CONDITIONS:	Store at 4°C for 1 week. For long term storage, aliquot and store at -20°C to -80°C. Avoid repeated freezing and thawing cycles.
DESCRIPTION:	GM-CSF, also known as granulocyte macrophage colony-stimulating factor, is a hematopoietic growth factor that stimulates the development of neutrophils and macrophages and promotes the proliferation and development of early erythroid megakaryocytic and eosinophilic progenitor cells. It is produced in by endothelial cells, monocytes, fibroblasts and T-lymphocytes. GM-CSF inhibits neutrophil migration and enhances the functional activity of the mature end-cells. Recombinant porcine GM-CSF was expressed in E. coli and purified by conventional chromatography, after refolding of the isolated inclusion bodies in a renaturation buffer.
AMINO ACID SEQUENCE:	aa 148 (aa 18-144)



(A) 3 µg by SDS-PAGE under reducing condition and stained by coomassie blue stain (B) Porcine GM-CSF stimulates cell proliferation of the TF-1 human erythroleukemic cells. The ED₅₀ range ≤ 40 ng/ml.

RELATED PRODUCTS:

- GM-CSF, human recombinant (4100)
- G-CSF, human recombinant (4094)
- GM-CSF, rat recombinant (4102)
- GM-CSF, human recombinant (4100)

FOR RESEARCH USE ONLY! Not to be used on humans.