

# Integrin beta 1, Human Recombinant

**CATALOG NO:** P1581-20 20 µg  
P1581-100 100 µg

**ALTERNATE NAMES:** Fibronectin receptor subunit beta, Glycoprotein IIa, VLA-4 subunit beta, CD29

**MOL. WT.** 51.7 kDa (462aa) (N terminus His-tag)

**SOURCE:** *E. coli*

**PURITY:** >80% SDS - PAGE

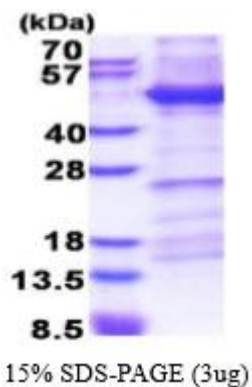
**FORM:** Liquid

**FORMULATION:** In 20 mM Tris-HCl buffer (pH 8.0) containing 0.4 M Urea, 10% glycerol

**STORAGE CONDITIONS:** Store at 4°C for 1 week. For long term storage, aliquot and store at -20°C to -80°C. Avoid repeated freezing and thawing cycles. -20°C

**DESCRIPTION:** Integrins are heterodimeric proteins made up of alpha and beta subunits. At least 18 alpha and 8 beta subunits have been described in mammals. Integrin family members are membrane receptors involved in cell adhesion and recognition in a variety of processes including embryogenesis, hemostasis, tissue repair, immune response and metastatic diffusion of tumor cells. This gene encodes a beta subunit. Multiple alternatively spliced transcript variants which encode different protein isoforms have been found for this gene. Recombinant human ITGB1 protein, fused to His-tag at N-terminus, was expressed in *E. coli*.

**AMINO ACID SEQUENCE:** aa 21-465



3 µg by SDS-PAGE under reducing condition and visualized by coomassie blue stain.

## RELATED PRODUCTS:

- Human CellExp™ Integrin alpha 6 beta 1 Heterodimer, Human Recombinant (P1203)
- Human CellExp™ Integrin alpha V beta 5 Heterodimer, Human recombinant (P1121)
- Human CellExp™ Integrin beta-5 Extracellular Domain (ED), Human Recombinant (P1172)
- Human CellExp™ Integrin alpha V beta 8, Human recombinant (P1122)

**FOR RESEARCH USE ONLY! Not to be used on humans.**