

Recombinant COVID-19 3C-like Proteinase

10/20

CATALOG NO:	P1606-10 10 µg P1606-50 50 µg
ALTERNATE NAMES:	SARS-CoV-2 3C-like Proteinase; SARS coronavirus main proteinase; M Proteinase, 3CL Proteinase, 3CL-Mpro, 3C-like main protease; 3C-like protease
MOL. WT.	33.79 kDa
NCBI GENE ID:	QIZ13716.1
PURITY:	≥ 95% by SDS-PAGE
SOURCE:	<i>E.coli</i>
FORM:	Liquid
FORMULATION:	In 50 mM Tris-HCl, pH 8.0, 100 mM NaCl
AMINO ACID SEQUENCE:	aa 3264-3569
STORAGE CONDITIONS:	Divide into small aliquots and store at -80°C. Avoid repeated freeze-thaw cycles.
DESCRIPTION:	SARS-CoV-2, a novel strain of coronavirus causes the infectious disease COVID-19. 3C-like protease is the main cysteine protease of the virus which hydrolyses viral polyproteins to produce functional proteins which is essential for coronavirus replication. It is an important therapeutic target for COVID-19.

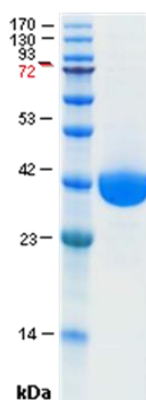


Fig A. COVID-19 3C-like Proteinase protein was loaded on SDS-PAGE. It migrates as a band at 33-34 kDa.

RELATED PRODUCTS:

Human CellExp™ Angiotensin-Converting Enzyme 2 (ACE2), Human Recombinant (Cat. No. P1535)
 Recombinant SARS-CoV-2 3C-like Proteinase (Cat. No. P1550)
 Human CellExp™ SARS-CoV-2 Spike Protein (RBD), Recombinant (Cat. No. P1530)
 Recombinant Coronavirus Spike Protein (MERS-CoV S1; 56-295) (Cat. No. P1514)
 Human CellExp™ Coronavirus Spike Protein (SARS-CoV-2; S1), Recombinant (Cat. No. P1524)

FOR RESEARCH USE ONLY! Not to be used on humans.