

Human CellExp™ Beta 2 Microglobulin

10/20

CATALOG NO:	P1611-10 10 µg P1611-50 50 µg
ALTERNATE NAMES:	B2M
MOL. WT.	The protein migrates as a ~12-13 kDa band in SDS-PAGE.
ACCESSION NO:	P61769, NP_004039.1
GENE ID:	567
PURITY:	≥ 97% by SDSPAGE
SOURCE:	HEK293 cells
ENDOTOXIN:	< 0.1 EU/µg of the protein as determined by LAL method
TAG:	6xHis tag at the C-terminus
FORM:	Lyophilized protein
FORMULATION:	Lyophilized from a 0.22 µm filtered solution of PBS, pH 7.4.
RECONSTITUTION:	Reconstitute to a concentration of 0.1-0.5 mg/ml in sterile distilled water.
AMINO ACID SEQUENCE:	aa Ile21-Met119
STORAGE CONDITIONS:	Keep the lyophilized protein at -20 °C to -80 °C for long term storage. After reconstitution, the protein solution is stable at -20 °C for 3 months, at 2-8 °C for up to 1 week. Protein should be aliquoted and stored at -20 °C or -80 °C. Avoid repeated freeze-thaw cycles.
DESCRIPTION:	Beta 2 Microglobulin is a component of the class I major histocompatibility complex (MHC). It presents the antigenic peptides to the immune system. It is present in small amounts in serum, csf, and urine of normal people and to a much greater degree in the urine and plasma of patients with tubular proteinuria, renal failure or kidney transplants. The levels of Beta 2 Microglobulin are increased in multiple myeloma. The protein has a predominantly beta-pleated sheet structure that can form amyloid fibrils in some pathological conditions.

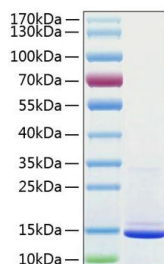


Fig A. Human Beta 2 Microglobulin protein was loaded on SDS-PAGE and visualized by Coomassie blue stain. The protein migrates as a ~13 kDa band in SDS-PAGE.

RELATED PRODUCTS:

- CA 19-9, Human Liver Metastases (Cat. No. P1437)
- CA 15-3, Human Breast Adenocarcinoma (Cat. No. P1435)
- Beta 2 Microglobulin, Human Urine (Cat. No. P1432)
- CA 72-4, Human Metastatic Liver Carcinoma (Cat. No. P1436)
- CA-125, Human Ascites Fluid (Cat. No. P1446)

FOR RESEARCH USE ONLY! Not to be used on humans.