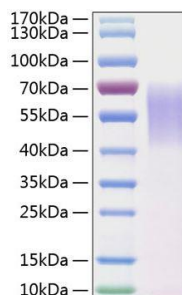


Human CellExp™ LYPD3

10/20

CATALOG NO:	P1612-10 10 µg P1612-50 50 µg
ALTERNATE NAMES:	Ly6/PLAUR Domain-Containing Protein; LYPD3; C4.4A; GPI-anchored metastasis-associated protein C4.4A homolog; Matrigel-induced gene C4 protein; MIG-C4
MOL. WT.	The protein migrates as a band at 45-68 kDa in SDS-PAGE.
GENE ID:	27076
ACCESSION NO:	O95274, NP_055215.2
PURITY:	≥ 97% by SDS-PAGE
SOURCE:	HEK293 cells
ENDOTOXIN:	< 0.1 EU/µg of the protein as determined by LAL method.
TAG:	6xHis tag at the C-terminus
FORM:	Lyophilized protein
FORMULATION:	Lyophilized from a 0.22 µm filtered solution of PBS, pH 7.4.
RECONSTITUTION:	Reconstitute to a concentration of 0.1-0.5 mg/ml in sterile distilled water.
AMINO ACID SEQUENCE:	aa Leu31-His286
STORAGE CONDITIONS:	Keep the lyophilized protein at -20 °C to -80 °C for long term storage. After reconstitution, the protein solution is stable at -20 °C for 3 months or at 2-8 °C for up to 1 week. Protein should be aliquoted and stored at -20 °C or -80 °C. Avoid repeated freeze-thaw cycles.
DESCRIPTION:	LYPD3 is a structural homologue of the urokinase-type plasminogen activator receptor (uPAR or PLAUR) and contains two Ly-6 (leucocyte antigen 6)/uPAR/α-neurotoxin domains. It is a metastasis-associated membrane protein and is elevated in lung adenocarcinoma.



Human LYPD3 protein was loaded on SDS-PAGE and visualized by Coomassie blue stain. The protein migrates as a ~45-68 kDa band in SDS-PAGE.

RELATED PRODUCTS:

CA 15-3, Human Breast Adenocarcinoma (Cat. No. P1435)
 Human CellExp™ Beta 2 Microglobulin (Cat. No. P1611)
 Beta 2 Microglobulin, Human Urine (Cat. No. P1432)
 CA 72-4, Human Metastatic Liver Carcinoma (Cat. No. P1436)
 CA-125, Human Ascites Fluid (Cat. No. P1446)

FOR RESEARCH USE ONLY! Not to be used on humans.