

Human Recombinant Gamma-Synuclein

10/20

CATALOG NO:	P1613-10 10 µg P1613-50 50 µg
ALTERNATE NAMES:	Synuclein gamma; breast cancer-specific protein 1; SNCG; BCSG1; PERSYN; PRSN; Synoretin; Breast cancer specific gene 1; Breast cancer specific gene 1; SR; Synoretin
MOL. WT.	13.3 kDa
ACCESSION NO:	O76070, NP_003078
PURITY:	≥ 90% by SDS-PAGE
SOURCE:	<i>E.coli</i>
ENDOTOXIN:	< 1 EU/µg of the protein as determined by LAL method.
FORM:	Liquid
FORMULATION:	In 20 mM Tris-HCl buffer (pH 7.5) containing 0.1 M NaCl.
AMINO ACID SEQUENCE:	aa 1-127
STORAGE CONDITIONS:	Divide into small aliquots and store at -20 °C or -80 °C. Avoid repeated freeze-thaw cycles.

DESCRIPTION: Synuclein gamma is a member of the synuclein family of proteins which are implicated in neurodegenerative diseases and cancer. Gamma-Synuclein plays a role in neurofilament network integrity and may be involved in modulating axonal architecture. The levels of Gamma-Synuclein are elevated in various types of cancer. It is highly expressed in breast carcinomas and has the potential to be a useful marker for breast cancer progression.

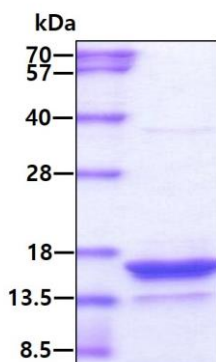


Fig A. 3 µg of human Gamma-Synuclein was loaded on SDS-PAGE under reducing conditions and visualized by Coomassie blue stain. The protein migrates higher than the expected 13.3 kDa band.

RELATED PRODUCTS:

CA 15-3, Human Breast Adenocarcinoma (Cat. No. P1435)
 Beta 2 Microglobulin, Human Urine (Cat. No. P1432)
 Anti-Gamma synuclein (SNCG) Antibody (Cat. No. A1761)
 Human CellExp™ Beta 2 Microglobulin (Cat. No. P1611)
 CA 72-4, Human Metastatic Liver Carcinoma (Cat. No. P1436)

FOR RESEARCH USE ONLY! Not to be used on humans.