

Human Recombinant Chromogranin A

10/20

CATALOG NO:	P1614-10 10 µg P1614-50 50 µg
ALTERNATE NAMES:	CgA; CHGA; Pituitary secretory protein I; Chromogranin-A, beta Granin; SP-I; Chromogranin A parathyroid secretory protein 1
MOL. WT.	51.2 kDa
ACCESSION NO:	P10645, NP_001266
PURITY:	≥ 80% by SDS-PAGE
SOURCE:	<i>E.coli</i>
TAG:	His-Tag
FORM:	Liquid
FORMULATION:	In 20 mM Tris-HCl buffer (pH 7.5) containing 2 mM EDTA, 0.1 mM PMSF, 10% glycerol.
AMINO ACID SEQUENCE:	aa 19-457
STORAGE CONDITIONS:	Divide into small aliquots and store at -20 °C or -80 °C. Avoid repeated freeze-thaw cycles.

DESCRIPTION: Chromogranin A is a member of the chromogranin/secretogranin family of neuroendocrine secretory proteins. It is found in secretory vesicles of neurons and endocrine cells. This protein is a precursor for biologically active peptides such as vasostatin, pancreastatin and parastatin. It can be used as a marker for carcinoid tumors, pheochromocytomas, paragangliomas and other neuroendocrine tumors.

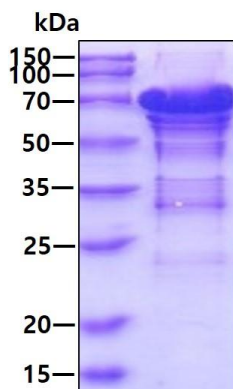


Fig A. 3 µg of human Chromogranin A was loaded on SDS-PAGE under reducing conditions and visualized by Coomassie blue stain. The protein migrates higher than the expected 51.2 kDa band.

RELATED PRODUCTS:

Human CellExp™ Beta 2 Microglobulin (Cat. No. P1611)
 Beta 2 Microglobulin, Human Urine (Cat. No. P1432)
 Anti-Chromogranin A / CHGA Antibody (CGA/413 + CHGA/777 + CHGA/798) (Cat. No. A1576)
 Chromogranin A (CgA) ELISA Kit (Cat. No. K4241)
 CA 15-3, Human Breast Adenocarcinoma (Cat. No. P1435)

FOR RESEARCH USE ONLY! Not to be used on humans.