

Human CellExp™ Podoplanin

10/20

CATALOG NO:	P1615-10 10 µg P1615-50 50 µg
ALTERNATE NAMES:	Podoplanin; Aggrus; Glycoprotein 36; Gp36; PA2.26 antigen; T1-alpha; T1A; PDPN; PSEC0003; PSEC0025
MOL. WT.	The protein migrates as a band at 50-65kDa in SDS-PAGE.
NCBI GENE ID:	10630
ACCESSION NO:	Q86YL7-3
PURITY:	≥ 95% by SDS-PAGE
SOURCE:	HEK293 cells
ENDOTOXIN:	< 0.1 EU/µg of the protein as determined by LAL method.
TAG:	Fc, 6xHis tag at the C-terminus
FORM:	Lyophilized protein
FORMULATION:	Lyophilized from a 0.22 µm filtered solution of PBS, pH 7.4.
RECONSTITUTION:	Reconstitute to a concentration of 0.1-0.5 mg/ml in sterile distilled water.
AMINO ACID SEQUENCE:	aa Glu97–Lys199
STORAGE CONDITIONS:	Keep the lyophilized protein at -20 °C to -80 °C for long term storage. After reconstitution, the protein solution is stable at -20 °C for 3 months or at 2-8 °C for up to 1 week. Protein should be aliquoted and stored at -20 °C or -80 °C. Avoid repeated freeze-thaw cycles.
DESCRIPTION:	Podoplanin is a 36 kDa type I transmembrane sialoglycoprotein. Podoplanin is widely expressed in different cells such as glomerular podocytes, type I alveolar cells, osteocytes, mesothelial cells, choroid plexus, glia cells, some neurons, fibroblasts, etc. It is also expressed in lymphatic endothelial cells and can be used to detect lymphangioma, Kaposi's sarcoma, epithelioid mesothelioma, hemangioblastoma, seminoma and angiosarcoma which may have undergone lymphatic differentiation.

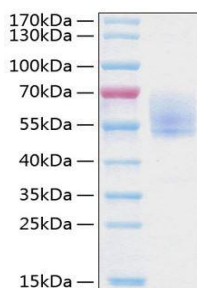


Fig A. Human Podoplanin protein was loaded on SDS-PAGE and visualized by Coomassie blue stain. The protein migrates as a band at 50-65kDa.

RELATED PRODUCTS:

Human CellExp™ Beta 2 Microglobulin (Cat. No. P1611)
 Human Recombinant Chromogranin A (Cat. No. P1614)
 Beta 2 Microglobulin, Human Urine (Cat. No. P1432)
 Anti-Podoplanin Antibody (Cat. No. A1564)
 CA 15-3, Human Breast Adenocarcinoma (Cat. No. P1435)

FOR RESEARCH USE ONLY! Not to be used on humans.