

Human Recoverin

11/20

CATALOG NO: P1617-10 10 µg
 P1617-50 50 µg

ALTERNATE NAMES: RCVRN; RCV1; Cancer-associated retinopathy protein; Protein CAR

MOL. WT. 23 kDa

ACCESSION NO: P35243, NP_002894

PURITY: ≥ 95% by SDS-PAGE

SOURCE: *E.coli*

AMINO ACID SEQUENCE: aa 1-200 of human protein.

FORM: Liquid

FORMULATION: In 20 mM Tris-HCl buffer (pH 8.0) containing 1 mM EDTA, 2 mM MgCl₂, 10% glycerol.

STORAGE CONDITIONS: Divide into small aliquots and store at -20 °C or -80 °C. Avoid repeated freeze-thaw cycles.

DESCRIPTION: Recoverin is a calcium-binding protein that is primarily detected in the photoreceptor cells of the eye. It contains three calcium-binding EF-hand domains. It controls phosphorylation of the visual receptor rhodopsin by inhibiting rhodopsin kinase. It is the autoantigen responsible for the degenerative disease of the retina known as cancer-associated retinopathy (CAR), a paraneoplastic syndrome.

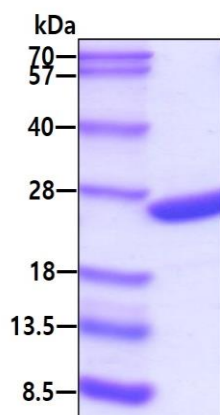


Fig A. 3 µg of human recoverin protein was loaded on SDS-PAGE under reducing conditions and visualized by Coomassie blue stain.

RELATED PRODUCTS:

Human CellExp™ Beta 2 Microglobulin (Cat. No. P1611)
 Human Recombinant Gamma-Synuclein (Cat. No. P1613)
 Human Recombinant Chromogranin A (Cat. No. P1614)
 Human CellExp™ Podoplanin (Cat. No. P1615)
 CA 15-3, Human Breast Adenocarcinoma (Cat. No. P1435)

FOR RESEARCH USE ONLY! Not to be used on humans.