

Human Alpha-Synuclein

11/20

CATALOG NO:	P1620-50 50 µg P1620-100 100 µg
ALTERNATE NAMES:	SNCA; Non-A beta component of AD amyloid; NACP; PARK1; PARK4; Non-A4 component of amyloid precursor; PD1
MOL. WT.	14.4 kDa
ACCESSION NO:	P37840, NP_000336
PURITY:	≥ 95% by SDS-PAGE
SOURCE:	<i>E.coli</i>
ENDOTOXIN:	< 1 EU/µg of protein as determined by LAL method.
AMINO ACID SEQUENCE:	aa 1-140
FORM:	Liquid
FORMULATION:	In 20 mM Tris-HCl buffer (pH 7.5) containing 0.1 M NaCl, 1 mM MgCl ₂ .
STORAGE CONDITIONS:	Divide into small aliquots and store at -20 °C or -80 °C. Avoid repeated freeze-thaw cycles.
DESCRIPTION:	Alpha-Synuclein is a neuronal protein that plays an important role in presynaptic signaling and membrane trafficking. It is a soluble, natively unfolded protein with an extended structure primarily composed of random coils. It aggregates and interacts with other proteins such as synphilin-1, to induce neuronal cell toxicity in Parkinson's disease.

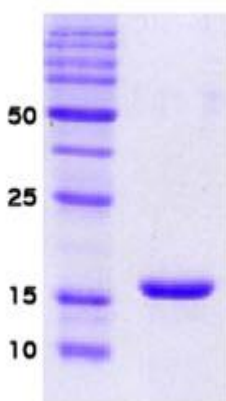


Fig A. 3 µg of human Alpha-Synuclein was loaded on SDS-PAGE under reducing conditions and visualized by Coomassie blue stain.

RELATED PRODUCTS:

CDNF, Human Recombinant (Cat. No. 7127)
 Human Recombinant Gamma-Synuclein (Cat. No. P1613)
 APP (His-tagged), human recombinant (Cat. No. 7887)
 Tau-441, Human Recombinant (Cat. No. P1192)
 Protein Deglycase (DJ-1), human recombinant (Cat. No. P1130)

FOR RESEARCH USE ONLY! Not to be used on humans.