

# Human Tau-352

11/20

<b>CATALOG NO:</b>	P1622-20 20 µg P1622-50 50 µg
<b>ALTERNATE NAMES:</b>	Microtubule-associated protein tau; Neurofibrillary tangle protein; Paired helical filament-tau; PHF-tau; MAPTL; MTBT1; Tau ON3R; tau isoform 4; ht23; 3RS tau
<b>MOL. WT.</b>	38.9 kDa
<b>ACCESSION NO:</b>	P10636, NP_058525
<b>PURITY:</b>	≥ 85% by SDS-PAGE
<b>SOURCE:</b>	<i>E.coli</i>
<b>TAG:</b>	His-tag
<b>AMINO ACID SEQUENCE:</b>	The target protein is expressed with the sequence (aa 1-352) of human tau-352 fused to His-tag at the N-terminus.
<b>FORM:</b>	Liquid
<b>FORMULATION:</b>	In 20 mM Tris-HCl buffer (pH 8.0) containing 0.2 M NaCl, 1 mM DTT, 10% glycerol
<b>STORAGE CONDITIONS:</b>	Divide into small aliquots and store at -20 °C or -80 °C. Avoid repeated freeze-thaw cycles.
<b>DESCRIPTION:</b>	Tau is a neuronal microtubule-associated protein. It stabilizes microtubules in axons. Tau protein become hyperphosphorylated and forms insoluble aggregates called neurofibrillary tangles in Alzheimer's disease. The accumulation of abnormal tau aggregates causes cytotoxicity, which is described as a gain-of-toxic function model. Tau gene undergoes alternative splicing, giving rise to six different isoforms. Tau-352 isoform lacks exons 2, 3 and 10.

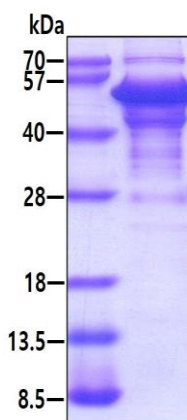


Fig A. 3 µg of human Tau-352 protein was loaded on SDS-PAGE under reducing conditions and visualized by Coomassie blue stain.

## RELATED PRODUCTS:

CNTF, human recombinant (Cat. No. P1093)  
 Human Alpha-Synuclein (Cat. No. P1620)  
 Human Tau-383 (Cat. No. P1621)  
 GFAP, Human Recombinant (Cat. No. P1364)  
 Tau-441, Human Recombinant (Cat. No. P1192)

**FOR RESEARCH USE ONLY! Not to be used on humans.**