

Human MAGEA4

11/20

CATALOG NO:	P1623-20 20 µg P1623-50 50 µg
ALTERNATE NAMES:	CT1.4; MAGE-41; MAGE-X2; MAGE4; MAGE4A; MAGE4B; MAGE family member A4; Melanoma-associated antigen 4; Cancer/testis antigen 1.4
MOL. WT.	37 kDa
ACCESSION NO:	P43358, AAH17723
PURITY:	≥ 90% by SDS-PAGE
SOURCE:	<i>E.coli</i>
TAG:	His-Tag
AMINO ACID SEQUENCE:	The target protein is expressed with the sequence (aa 1-317) of human MAGEA4 fused to His-tag at the N-terminus.
FORM:	Liquid
FORMULATION:	In 20 mM Tris-HCl buffer (pH 8.0) containing 20% glycerol.
STORAGE CONDITIONS:	Divide into small aliquots and store at -20 °C or -80 °C. Avoid repeated freeze-thaw cycles.
DESCRIPTION:	MAGEA4 is a member of the MAGEA family, which directs the expression of tumor antigens that are recognized on a human melanoma by autologous cytolytic T lymphocytes. This protein is overexpressed in head and neck squamous cell carcinoma, lung carcinoma and ovarian carcinoma. Elevated levels of the protein can be a predictive marker of hepatocellular carcinogenesis.

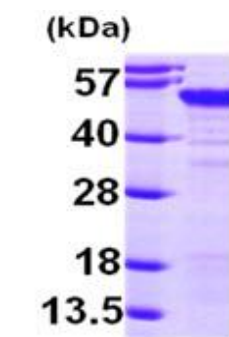


Fig A. 3 µg of human MAGEA4 protein was loaded on SDS-PAGE under reducing conditions and visualized by Coomassie blue stain.

RELATED PRODUCTS:

Human Recombinant Chromogranin A (Cat. No. P1614)
 Human CellExp™ Beta 2 Microglobulin (Cat. No. P1611)
 S100B, human recombinant (Cat. No. P1035)
 Human Recombinant Gamma-Synuclein (Cat. No. P1613)
 Anti-MAGEA4 Antibody (Cat. No. A1705)

FOR RESEARCH USE ONLY! Not to be used on humans.