

# Human Beta-Catenin

12/20

<b>CATALOG NO:</b>	P1626-20    20 µg P1626-50    50 µg
<b>ALTERNATE NAMES:</b>	Catenin beta-1; CTNNB1; CTNNB
<b>MOL. WT.</b>	The protein migrates as a ~100-110 kDa band in SDS-PAGE.
<b>ACCESSION NO:</b>	P35222-1, XP_016861227.1
<b>PURITY:</b>	≥ 92% by SDS-PAGE
<b>SOURCE:</b>	<i>E.coli</i>
<b>ENDOTOXIN:</b>	< 0.1 EU/µg of the protein as determined by LAL method.
<b>TAG:</b>	His Tag
<b>AMINO ACID SEQUENCE:</b>	The target protein is expressed with the sequence (aa Met1-Leu781) of human Beta-Catenin protein fused to 6xHis tag at the C-terminus.
<b>FORM:</b>	Liquid
<b>FORMULATION:</b>	In 0.22 µm filtered solution of 20 mM Hepes, 150 mM NaCl, 10% Glycerol, 5 mM DTT, pH 7.5.
<b>STORAGE CONDITIONS:</b>	Divide into small aliquots and store at -80 °C. Avoid repeated freeze-thaw cycles.
<b>DESCRIPTION:</b>	Beta-catenin is a key downstream component of the canonical Wnt signaling pathway. β-catenin associates with E-cadherin and is involved in regulation of cell adhesion. Stimulation of Wnt pathway can trigger nuclear translocation of β-catenin. Over expression of β-catenin occurs in various cancers such as colorectal, lung, malignant breast tumor, hepatocellular carcinoma and it can be used as a tumor biomarker.

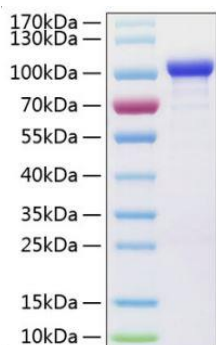


Fig A. Recombinant Beta-Catenin protein was loaded on SDS-PAGE and visualized by Coomassie blue stain. The protein migrates as a ~100-110 kDa band in SDS-PAGE.

## RELATED PRODUCTS:

WNT-1, human recombinant (Cat. No. 4754)  
 Human Recombinant Gamma-Synuclein (Cat. No. P1613)  
 Anti-Catenin, beta Antibody (CTNNB1/1507) (Cat. No. A1467)  
 Human CellExp™ Beta 2 Microglobulin (Cat. No. P1611)  
 Human CellExp™ E-Cadherin /ECAD /Cadherin-1/CD324 Protein, human recombinant (Cat. No. 7420)

**FOR RESEARCH USE ONLY! Not to be used on humans.**