

# CDK2AP1 Protein, Human Recombinant 12/20

<b>CATALOG NO:</b>	P1630-10    10 µg P1630-100    100 µg
<b>ALTERNATE NAMES:</b>	CDK2 A1; CDKA1; CDK2 associated protein 1; DOC1; Cyclin-dependent kinase 2
<b>MOL. WT.</b>	16.6 kDa
<b>ACCESSION NO:</b>	NP_004633, O14519
<b>PURITY:</b>	≥ 95% by SDS-PAGE
<b>SOURCE:</b>	<i>E.coli</i>
<b>TAG:</b>	His-Tag
<b>AMINO ACID SEQUENCE:</b>	The target protein is expressed with the sequence (aa 1-152) of human CDK2AP1 fused to His-tag.
<b>FORM:</b>	Liquid
<b>FORMULATION:</b>	In 20 mM Tris-HCl buffer (pH 8.0) containing 50% glycerol, 2 mM DTT.
<b>STORAGE CONDITIONS:</b>	Can be stored at +2 °C to +8 °C for 1 week. For long term storage, aliquot and store at -20 °C to -80 °C. Avoid repeated freezing and thawing cycles.
<b>DESCRIPTION:</b>	Cyclin-dependent kinase 2-associated protein 1 (CDK2AP1), a growth suppressor that negatively regulates CDK2 activity, has been implicated in various types of cancer. This protein was found to also interact with DNA polymerase alpha/primase and mediate the phosphorylation of the large p180 subunit, which suggested the regulatory role in DNA replication during S phase of the cell cycle. This protein also forms a core subunit of the nucleosome remodeling and histone deacetylation (NURD) complex that epigenetically regulates embryonic stem cell differentiation.

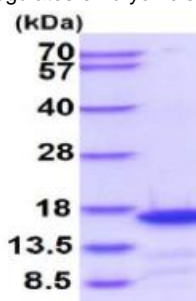


Fig A. 3 µg of CDK2AP1 protein was loaded on SDS-PAGE under reducing conditions and visualized by Coomassie blue stain.

#### RELATED PRODUCTS:

AT-7519 hydrochloride (Cat No: 2816)  
 RO-3306 (Cat No: 2039)  
 NU6102 (Cat No : 2313)  
 Phospho-Cdk1/2/3 (Thr14) Antibody (Cat No : A1260)

**FOR RESEARCH USE ONLY! Not to be used on humans.**