

SSX2 Protein, Human Recombinant

12/20

CATALOG NO:	P1635-20 20 µg
ALTERNATE NAMES:	Synovial sarcoma; CT5.2b; X breakpoint 2B; Cancer/testis antigen family 5; Member 2b
MOL. WT.	24.0 kDa
ACCESSION NO:	NP_001157889; Q16385
PURITY:	≥ 85% by SDS-PAGE
SOURCE:	<i>E.coli</i>
TAG:	His-Tag
AMINO ACID SEQUENCE	The target protein is expressed with the sequence (210 aa) of SSX2 fused to His-tag at the N-terminus.
FORM:	Liquid
FORMULATION:	In 20 mM Tris-HCl buffer (pH 8.0) containing 10% glycerol, 0.4 M Urea.
STORAGE CONDITIONS:	Can be stored at +2 °C to +8 °C for 1 week. For long term storage, aliquot and store at -20 °C to -80 °C. Avoid repeated freezing and thawing cycles.
DESCRIPTION:	SSX2 belongs to the family of cancer/testis (CT) antigens with characteristic mRNA expression in normal testis and in cancer. This gene belongs to the family of highly homologous synovial sarcoma X (SSX) breakpoint proteins. This protein may function as transcriptional repressors. The SSX proteins are a highly homologous group of CT-X antigens with demonstrated immunogenicity in patients with cancer, and a number of characteristics that make them attractive targets for tumor therapy. They are also capable of eliciting spontaneous humoral and cellular immune responses in cancer patients, and are potentially useful targets in cancer vaccine-based immunotherapy.

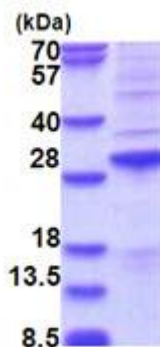


Fig A. 3 µg of SSX2 protein was loaded on SDS-PAGE under reducing conditions and visualized by Coomassie blue stain.

RELATED PRODUCTS:

Anti-SSX5 Antibody (Cat No: A1931)

FOR RESEARCH USE ONLY! Not to be used on humans.