

# CD39L2 Protein, Mouse Recombinant

12/20

<b>CATALOG NO:</b>	P1636-10 10 µg P1636-20 20 µg
<b>ALTERNATE NAMES:</b>	Cd39l; DJ738P15.3; 2700026H11Rik; NTPDa; Entpd6; Ectonucleoside triphosphate diphosphohydrolase 6 isoform1; NTPDase-6
<b>MOL. WT.</b>	47.3 kDa
<b>ACCESSION NO:</b>	NP_742115.2; Q3U0P5
<b>PURITY:</b>	≥ 95% by SDS-PAGE
<b>SOURCE:</b>	HEK293 cells
<b>ENDOTOXIN:</b>	< 1 EU/ µg of the protein as determined by LAL method.
<b>TAG:</b>	His-Tag
<b>AMINO ACID SEQUENCE</b>	The target protein is expressed with the sequence (aa 1-433) of CD39L2 fused to His-tag at the C-terminus.
<b>FORM:</b>	Liquid
<b>FORMULATION:</b>	In Phosphate-Buffered Saline (pH 7.4) containing 20% glycerol.
<b>STORAGE CONDITIONS:</b>	Can be stored at +2 °C to +8 °C for 1 week. For long term storage, aliquot and store at -20 °C to -80 °C. Avoid repeated freezing and thawing cycles.
<b>DESCRIPTION:</b>	CD39L2, also known as ENTPD6, is a nucleoside phosphohydrolase of the CD39 family of enzymes that is present on the surface of cells. It is soluble monomeric enzyme, making it more amenable to thorough structural and functional analysis than the membrane-bound forms. Soluble CD39L2 preferentially exhibits nucleoside diphosphatase activity, which is dependent on the presence of divalent cations. It is expressed at its highest levels in cardiac muscle and in heart capillary endothelial cells. Also, it plays a role in the regulation and recruitment of platelet activation in heart. Recombinant mouse CD39L2, fused to His-tag at C-terminus, was expressed in HEK293 cell and purified by using conventional chromatography techniques.

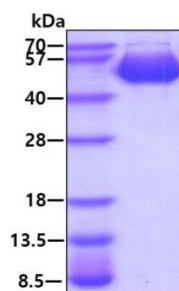


Fig A. 3 µg of CD39L2 mouse recombinant protein was loaded on SDS-PAGE under reducing conditions and visualized by Coomassie blue stain.

## RELATED PRODUCTS:

Anti-NTPCR Antibody (Cat No: A1232)

**FOR RESEARCH USE ONLY! Not to be used on humans.**