

# FOXL2 Protein, Human Recombinant

12/20

<b>CATALOG NO:</b>	P1637-20 20 µg
<b>ALTERNATE NAMES:</b>	P-Frk; PFRK; POF3; Pfrk Forkhead box protein L2; PINTO; BPES; BPES1; Pituitary forkhead factor
<b>MOL. WT.</b>	73 kDa
<b>ACCESSION NO:</b>	NM_023067, P58012; 605597
<b>PURITY:</b>	≥ 70% by SDS-PAGE
<b>SOURCE:</b>	Sf9 cells
<b>TAG:</b>	GST Tag
<b>AMINO ACID SEQUENCE</b>	The target protein is expressed with the sequence (376 aa) of FOXL2 gene was fused to GST-tag at the N-terminus.
<b>FORM:</b>	Liquid
<b>FORMULATION:</b>	In 50 mM Tris-HCl, pH 7.5, 150 mM NaCl, 10mM glutathione, 0.1 mM EDTA, 0.25 mM DTT, 0.1 mM PMSF, 25% glycerol.
<b>STORAGE CONDITIONS:</b>	Store product at -70°C. For optimal storage, aliquot target into smaller quantities after centrifugation and store at recommended temperature. For most favorable performance, avoid repeated handling and multiple freeze/thaw cycles.

**DESCRIPTION:** Fork-head transcriptional factor forkhead box L2 (FOXL2) is a transcriptional regulator and a member of the large family of Forkhead Box (Fox) domain transcription factors. FOXL2 gene provides instructions for making a protein that attaches (binds) to specific regions of DNA and helps control the activity of particular genes. FOXL2 acts as a transcriptional repressor for multiple genes, including the human steroidogenic acute regulatory (StAR) gene. This protein plays a key role in sex differentiation and oogenesis. FOXL2 is a central transcription factor of the ovary and is involved in virtually all stages of the ovarian development and function, as well as in granulosa cell (GC)-related pathologies. It maintains GC identity through the repression of testis-specific genes. Expansion of a polyalanine repeat region and other mutations in this gene are a cause of blepharophimosis syndrome and premature ovarian failure. In addition to ovarian expression of FOXL2, there has been recent studies to suggest that overexpression of FOXL2 has been implicated in endometriosis in addition to activin A. Full-length recombinant human FOXL2 was expressed by baculovirus in Sf9 insect cells using an N-terminal GST tag.

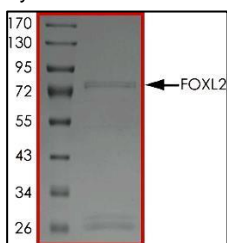


Fig A. FOXL2 protein was loaded on SDS-PAGE under reducing conditions and visualized by Coomassie blue stain.

## RELATED PRODUCTS:

FoxL2 Blocking Peptide (Cat No: 3742BP)

FoxL2 Antibody (Cat No: 3742)

**FOR RESEARCH USE ONLY! Not to be used on humans.**