

Human CellExp™ Erythropoietin Receptor

01/21

CATALOG NO:	P1638-20 20 µg P1638-50 50 µg
ALTERNATE NAMES:	EPOR, EPO-R
MOL. WT.	The protein migrates as a band at ~55-60 kDa band in SDS-PAGE.
ACCESSION NO:	P19235, NP_000112.1
PURITY:	≥ 95% by SDS-PAGE
SOURCE:	HEK293 cells
ENDOTOXIN:	< 0.1 EU/µg of the protein as determined by LAL method.
TAG:	Fc and 6xHis tag at the C-terminus
AMINO ACID SEQUENCE:	The target protein is expressed with the sequence (Ala25-Pro250) of human Erythropoietin Receptor protein fused to Fc and 6xHis tag at the C-terminus.
FORM:	Lyophilized protein
FORMULATION:	Lyophilized from a 0.22 µm filtered solution of PBS, 0.1 mM EDTA and 0.1% CHAPS, pH 7.4.
RECONSTITUTION:	Reconstitute to a concentration of 0.1-0.5 mg/ml using sterile distilled water
ACTIVITY:	Measured by its ability to inhibit Epo-dependent proliferation of TF-1 human erythroleukemic cells. The ED ₅₀ for this effect is 60-300 ng/ml in the presence of 0.2 U/ml of Recombinant Human EPO Receptor/EPOR.
STORAGE CONDITIONS:	Keep the lyophilized protein at -20 °C to -80 °C for long term storage. After reconstitution, the protein should be aliquoted and stored. The protein solution is stable at -20 °C for 3 months or at 2-8 °C for up to 1 week. Avoid repeated freeze-thaw cycles.
DESCRIPTION:	Erythropoietin Receptor is a member of the cytokine receptor family. It mediates erythropoietin-induced erythroblast proliferation and differentiation, activation of Jak2 tyrosine kinase which activates different intracellular pathways including: Ras/MAP kinase, phosphatidylinositol 3-kinase and STAT transcription factors. The stimulated erythropoietin receptor plays a role in erythroid cell survival. Defects in the erythropoietin receptor may produce erythroleukemia and familial erythrocytosis.

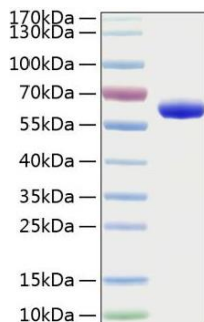


Fig A. Recombinant Erythropoietin Receptor protein was loaded on SDS-PAGE and visualized by Coomassie blue stain. The protein migrates as a band at ~55-60 kDa in SDS-PAGE.

RELATED PRODUCTS:

Human CellExp™ EPO, Human Recombinant (Cat. No. 6447)
Erythropoietin (Human) ELISA Kit (Cat. No. E4720)
EPO Antibody (Cat. No. 6969)
EPO-beta, human recombinant (Cat. No. 4766)
EPO-alpha, human recombinant (Cat. No. 4763)

FOR RESEARCH USE ONLY! Not to be used on humans.