

Human S100A4

01/21

CATALOG NO:	P1641-20 20 µg P1641-50 50 µg
ALTERNATE NAMES:	Calvasculin, Metastasin, Placental calcium-binding protein, S100 calcium-binding protein A4, 18A2, 42A, CAPL, FSP1, MTS1, P9KA, PEL98
MOL. WT.	13.8 kDa
ACCESSION NO:	P26447, NP_002952
PURITY:	≥ 95% by SDS-PAGE
SOURCE:	<i>E.Coli</i>
TAG:	His-tag
AMINO ACID SEQUENCE:	The target protein is expressed with the sequence (aa 1-101) of human S100A4 fused to His-tag at the N-terminus.
FORM:	Liquid
FORMULATION:	In 20 mM Tris-HCl buffer (pH 8.0) containing 10% glycerol
STORAGE CONDITIONS:	Divide into small aliquots and store at -20 °C or -80 °C. Avoid repeated freeze-thaw cycles.
DESCRIPTION:	S100A4 protein is a member of the S100 family of proteins containing 2 EF-hand calcium-binding motifs. S100 proteins are involved in the regulation of a number of cellular processes such as cell cycle progression and differentiation. S100A4 may play a role in motility, invasion, and tubulin polymerization. Chromosomal rearrangements and altered expression of this gene have been implicated in tumor metastasis. High levels of S100A4 are associated with poor prognosis in several types of cancers.

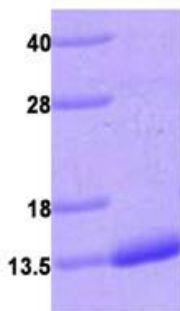


Fig A. 3 µg of human S100A4 protein was loaded on SDS-PAGE under reducing conditions and visualized by Coomassie blue stain.

RELATED PRODUCTS:

S100B, human recombinant (Cat. No. P1035)
 Human CellExp™ Beta 2 Microglobulin (Cat. No. P1611)
 Human Recombinant Gamma-Synuclein (Cat. No. P1613)
 Human S100A11 (Cat. No. P1618)
 Anti-S100A4 Antibody (Cat. No. A1704)

FOR RESEARCH USE ONLY! Not to be used on humans.