

Human CellExp™ CD40/TNFRSF5, Chicken Recombinant

CATALOG #:	P1657-10 10 µg P1657-50 50 µg
ALTERNATE NAMES:	B-cell surface antigen CD40 Gallus gallus (Chicken), TNFSF5, CD40L receptor, Tumor necrosis factor receptor superfamily member 5, Taxon identifier 9031, UniProtKB - Q9DDD2, Q9DDD2_CHICK
SOURCE:	HEK 293 cells (Val 24 - Ser 196)
PURITY:	≥ 95% by SDS-PAGE gel
MOL. WT.	20 kDa (6xHis tag at the C-terminus)
FORM:	Lyophilized
FORMULATION:	Lyophilized from 0.22 µm filtered PBS (pH 8.5) with 5% trehalose.
RECONSTITUTION:	Centrifuge the vial prior to opening. Reconstitute in sterile water. Do not vortex.
STORAGE CONDITIONS:	Store at -20 °C. After reconstitution, aliquot and store at -20 °C and use within 3 months. Avoid repeated freezing and thawing cycles.
DESCRIPTION:	Tumor necrosis factor receptor superfamily member 5 (TNFRSF5), also known as CD40, is a member of the TNF receptor superfamily. The expression of CD40 is diverse and expressed broadly on antigen-presenting cells (APC) such as dendritic cells, B cells, and monocytes as well as many nonimmune cells and a range of tumors. Chicken CD40 (chCD40) is mainly expressed on the surface of chicken APCs. The interaction of chCD40 and chCD40L (natural ligand for chCD40) provides crucial signals for the activation of chicken B-cells. CD40 and its ligand, CD40L, were shown to have conserved functions in mammals and birds.

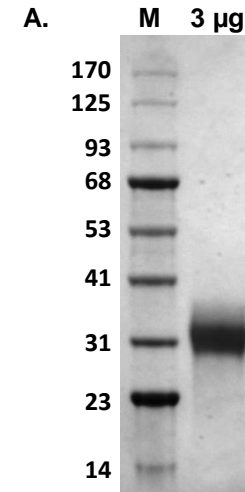


Fig. A. Chicken CD40 protein run on SDS-PAGE under reducing (R) conditions and stained with Coomassie Blue. The protein migrates at around 30 kDa due to glycosylation.

RELATED PRODUCTS:

- CD40 (human) ELISA Kit (**Cat. No. K3072-100**)
- CD40L (human) ELISA Kit (**Cat. No. K4783-100**)
- CD40Ligand/TRAP, human recombinant (**Cat. No. 4014-10, -50, -1000**)
- Human CellExp™ CD166/ ALCAM, human recombinant (**Cat. No. 7437-10, -50**)
- Human CellExp™ CD172A / SIRP, human recombinant (**Cat. No. 7506-10, -50**)
- CD40 Antibody (**Cat. No. 3072**)
- CD40 Blocking Peptide (**Cat. No. 3072BP**)
- QuickDetect™ CD40 Ligand (Human) ELISA Kit (**Cat. No. K4414**)
- Human CellExp™ CD47, human recombinant (**Cat. No. 7385-10, -50**)
- Human CellExp™ CD55/DAF, human recombinant (**Cat. No. 7432-10, -50**)
- Human CellExp™ CD74/DHLA, human recombinant (**Cat. No. 7387-10, -50**)
- Human CellExp™ CD223, human recombinant (**Cat. No. 7278-10, -50**)
- Human CellExp™ CD71, human recombinant (**Cat. No. 7279-10, -50**)
- Human CellExp™ CD273, human recombinant (**Cat. No. 7369-10, -50**)

FOR RESEARCH USE ONLY! Not to be used on humans.