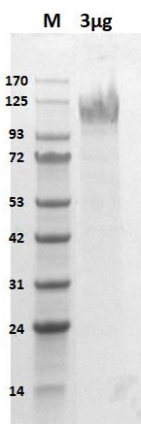


Human CellExp™ SARS-CoV-2 S1, Recombinant

CATALOG NO:	P1666-10 10 µg P1666-50 50 µg
ALTERNATE NAMES:	S1 Protein, Spike glycoprotein subunit1, S glycoprotein subunit1, SARS-CoV-2 S1 Protein
MOL. WT.	~120 kDa (8xHis tag at the C-terminus)
SOURCE:	HEK 293 cells
PURITY:	>95% SDS - PAGE
FORM:	Lyophilized
FORMULATION:	Lyophilized from 0.22 µm filtered PBS (pH 7.4) with 5% trehalose
RECONSTITUTION:	Centrifuge the vial prior to opening. Reconstitute in sterile PBS (pH 7.4). Do not vortex.
STORAGE CONDITIONS:	Store lyophilized protein at -20 °C. Once reconstituted, aliquot and store at -20 °C or -70 °C. Avoid repeated freeze-thaw cycles.
DESCRIPTION:	The spike (S) glycoprotein of coronaviruses mediates entry into receptor-expressing host cells and plays the most important role in viral attachment, fusion, and entry; therefore, it serves as an important target for monoclonal antibodies, entry inhibitors, and vaccines. The S protein has two domains S1 and S2, where S1 facilitates initial binding to the receptor and the S2 domain drives membrane fusion and eventual entry of the virus. Within the S1 protein, the highly conserved receptor-binding domain (RBD) expresses a high affinity for the Angiotensin converting enzyme 2 (ACE2) receptor and serves as the key binding factor for infection upon human respiratory epithelial cells.

AMINO ACID SEQUENCE: Val 16 - Arg 685



SDS-PAGE (4-20%) of Recombinant SARS-CoV-2 S1 Protein: 3 µg of the recombinant protein was loaded under reducing (R) conditions and stained with Coomassie Blue. The protein migrates to around ~120 kDa due to glycosylation.

RELATED PRODUCTS:

- Human CellExp™ ACE2, Human Recombinant (Cat. No. P1535)
- Human CellExp™ SARS-CoV-2 Spike Protein (RBD 310-568) (Cat. No. P1543)
- Human CellExp™ SARS-CoV-2 Nucleoprotein, Recombinant (Cat. No. P1554)
- Human CellExp™ SARS-CoV-2 S1 Protein (D614G) (Cat. No. P1652)
- Furin, Human Recombinant (Cat. No. P1658)
- Human CellExp™ SARS-CoV-2 S1 Protein (L452R), Recombinant (Cat. No. P1662)
- Human CellExp™ SARS-CoV-2 S1 (K417N), Recombinant (Cat. No. P1663)
- Human CellExp™ SARS-CoV-2 S1 (E484K), Recombinant (Cat. No. P1664)
- Human CellExp™ SARS-CoV-2 S1 (N501Y), Recombinant (Cat. No. P1665)
- SARS-CoV-2 S1 Protein-ACE2 Binding Inhibitor Screening Kit (Cat. No. K2050)
- Angiotensin II Converting Enzyme (ACE2) Inhibitor Screening Kit (Cat. No. K310)

FOR RESEARCH USE ONLY! Not to be used on humans.