

Recombinant Human plgR Protein

02/21

CATALOG NO:	P1701-20 20 µg P1701-50 50 µg
ALTERNATE NAMES:	Polymeric immunoglobulin receptor, PIGR, PlgR, Poly-Ig receptor, Hepatocellular carcinoma-associated protein TB6, polymeric immunoglobulin receptor precursor, MGC125361, MGC125362, FLJ22667
MOL. WT.	68.9 kDa
NCBI GENE ID:	5284
ACCESSION NO.:	P01833
PURITY:	≥ 95% by SDS-PAGE
SOURCE:	Baculovirus
ENDOTOXIN:	< 1 EU per 1 µg of protein as determined by LAL method
SPECIES:	Human
TAG:	C-terminal His Tag
AMINO ACID SEQUENCE:	The target is expressed with the sequence (Lys1-Arg638) of Human plgR with a His tag at the C-terminus.
FORM:	Liquid
FORMULATION:	In Phosphate-Buffered Saline (pH 7.4) containing 10% glycerol
STORAGE CONDITIONS:	Divide into small aliquots and store at -20 °C to -80 °C. Avoid repeated freeze-thaw cycles.
DESCRIPTION:	The polymeric immunoglobulin receptor is a carrier that transports IgA and IgM across epithelium. The human plgR has been implicated as a prognostic biomarker for hepatocellular carcinoma progression and metastasis.

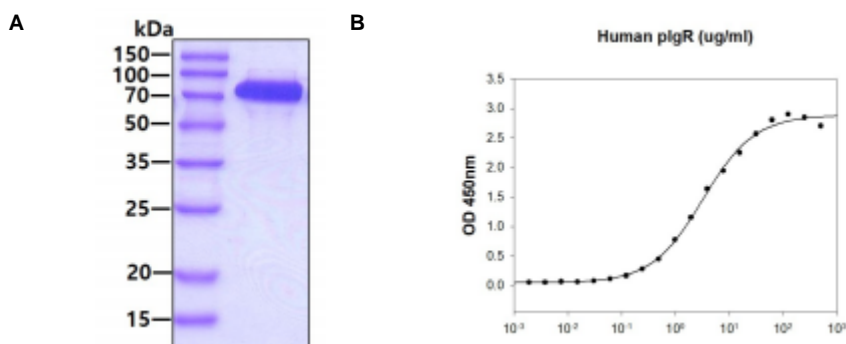


Figure A. 3 µg of human recombinant plgR protein was loaded on SDS-PAGE under reducing conditions and visualized by Coomassie blue stain. **Figure B.** Human IgM coated at 2 µg/ml (100 µl/well) can bind Human plgR. The ED₅₀ range ≤ 10 µg/ml.

RELATED PRODUCTS:

USP2 Antibody (Cat. No. 6141)
 Anti-Human IgM, Rabbit Monoclonal Antibody (Cat. No. A1795)
 QuickDetect™ IgA (Human) ELISA Kit (Cat. No. E4467)
 Anti-Human IgA (α1 & α2) Rabbit Monoclonal Antibody (Cat. No. A1796)
 QuickDetect™ IgM (Human) ELISA Kit (Cat. No. E4479)

FOR RESEARCH USE ONLY! Not to be used on humans.