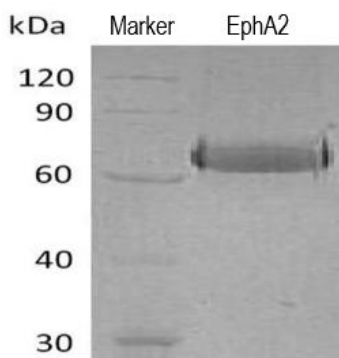


Human CellExp™ EphA2 (Active), Human Recombinant

05/21

CATALOG NO:	P1726-10 10 µg P1726-50 50 µg
ALTERNATE NAMES:	EPH Receptor A2; Tyrosine-Protein Kinase Receptor ECK; Ephrin Type-A Receptor 2; ECK; CTRCT6; ARCC2; CTPP1; CTPA
MOL. WT.	57.0 kDa predicted, 65-75 kDa observed
NCBI GENE ID:	1969
ACCESSION NO.:	P29317
ENDOTOXIN:	< 1.0 EU per µg as determined by the LAL method
PURITY:	> 95% by SDS-PAGE
SOURCE:	Human Cells
AMINO ACID SEQUENCE:	Ala 24 to Asn 534 with C-terminal 6xHis Tag
ACTIVITY:	Immobilized Human EphA2-His at 4 µg/ml (100 µl/well) can bind Human EFNA1-Fc. The ED50 of Human EphA2-His is 0.03 µg/ml
FORM:	Lyophilized powder
FORMULATION:	Lyophilized from a 0.2 µm filtered solution of PBS, pH 7.4
STORAGE CONDITIONS:	Store lyophilized protein at -20 °C or -80 °C. Once reconstituted, aliquot and store at -20 °C or -80 °C. Avoid repeated freeze-thaw cycles.
DESCRIPTION:	The Ephrin Type-A Receptor 2 (EphA2) is a member of the ephrin receptor subfamily of protein-tyrosine kinases, which are implicated in mediating nervous system development. EphA2 binds to membrane-bound ephrin-A family ligands residing on adjacent cells, leading to contact-dependending bidirectional signaling between the neighboring cells. The activation through the ligand-receptor association regulates cell migration, integrin-mediated adhesion, proliferation, and cell differentiation. EphA2 is involved in many physiological processes, including angiogenesis, early hindbrain development, and epithelial proliferation and branching morphogenesis during mammary gland development. Mutations in EphA2 are associated with certain genetic cataract disorders as well as cancer development and progression.



Human recombinant EphA2 was loaded on SDS-PAGE under reducing conditions and visualized by Coomassie blue stain.

RELATED PRODUCTS:

Phospho-EPHA2/3/4(Tyr588/596) Antibody (Cat. No. A1736)
 Human CellExp™ Acetylcholinesterase / AChE, Human Recombinant (Cat. No. P1475)
 Human CellExp™ EPHB4, Human Recombinant (Cat. No. 7451)
 Human CellExp™ CTLA4/CD152, Human Recombinant (Cat. No. 7476)
 Anti-Human Ephrin Type A receptor 2 (1C1), Human IgG1 Antibody (Cat. No. A1095)

FOR RESEARCH USE ONLY! Not to be used on humans.