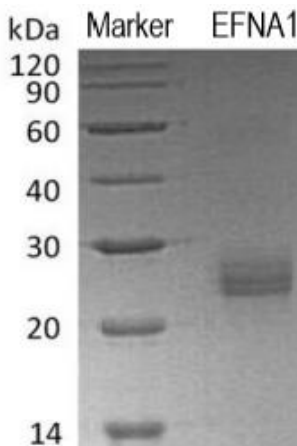


# Human CellExp™ Ephrin-A1 / EFNA1 (Active), Human Recombinant 05/21

<b>CATALOG NO:</b>	P1728-10    10 µg P1728-50    50 µg
<b>ALTERNATE NAMES:</b>	Ephrin A1; LERK1; EFL1; B61; EPH-Related Receptor Tyrosine Kinase Ligand 1; TNF Alpha-Induced Protein 4; TNFAIP4; ECKLG; EPLG1; GMAN
<b>MOL. WT.</b>	20.4 kDa predicted, 24-28 kDa observed
<b>NCBI GENE ID:</b>	1942
<b>ACCESSION NO.:</b>	P20827
<b>ENDOTOXIN:</b>	< 1.0 EU per µg as determined by the LAL method
<b>PURITY:</b>	> 95% by SDS-PAGE
<b>SOURCE:</b>	Human Cells
<b>AMINO ACID SEQUENCE:</b>	Asp 19 to Ser 182 with C-terminal 6xHis Tag
<b>ACTIVITY:</b>	Immobilized Human Ephrin-A1-His at 10 µg/ml (100 µl/well) can bind Human EphA2-Fc. The ED50 of Human Ephrin-A1-His is 12.43 µg/ml
<b>FORM:</b>	Lyophilized powder
<b>FORMULATION:</b>	Lyophilized from a 0.2 µm filtered solution of 20 mM PB, 15 0mM NaCl, pH 7.4
<b>STORAGE CONDITIONS:</b>	Store lyophilized protein at -20 °C or -80 °C. Once reconstituted, aliquot and store at -20 °C or -80 °C. Avoid repeated freeze-thaw cycles.
<b>DESCRIPTION:</b>	Ephrin-A1 (EFNA1) is a membrane-anchored ligend that binds to ephrin Type-A receptors such as EphA2 and EphA7. EFNA1 plays a key role in angiogenesis in normal and tumor contexts through its interaction with EphA2, which leads to Rac1 GTPase activation and subsequent vascular endothelial cell migration. While it has anti-oncogenic effects through its downregulation of EphA2 and FAK, EFNA1 overexpression has been observed in gastric cancer.



Human Ephrin-A1 was loaded on SDS-PAGE under reducing conditions and visualized by Coomassie blue stain.

## RELATED PRODUCTS:

Anti-Human Ephrin Type A receptor 2 (1C1), Human IgG1 Antibody (Cat. No. A1095)  
 Human CellExp™ CTLA4/CD152, Human Recombinant (Cat. No. 7476)  
 Human CellExp™ EPHB4, Human Recombinant (Cat. No. 7451)  
 Phospho-EPHA2/3/4(Tyr588/596) Antibody (Cat. No. A1736)  
 Human CellExp™ Acetylcholinesterase / AChE, Human Recombinant (Cat. No. P1475)

**FOR RESEARCH USE ONLY! Not to be used on humans.**