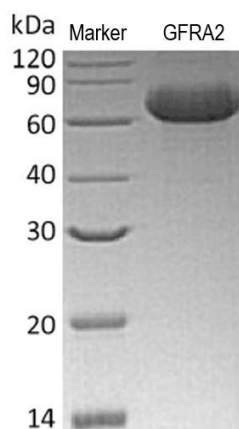


# Human CellExp™ GFRA2 / GDNFRB, Human Recombinant

05/21

<b>CATALOG NO:</b>	P1736-10 10 µg P1736-50 50 µg
<b>ALTERNATE NAMES:</b>	GDNF Family Receptor Alpha-2; GDNF Receptor Beta; Neurturin Receptor Alpha; RET Ligand 2
<b>MOL. WT.</b>	~60 to 85 kDa due to glycosylation
<b>NCBI GENE ID:</b>	2675
<b>ACCESSION NO.:</b>	O00451
<b>ENDOTOXIN:</b>	< 1.0 EU per µg as determined by the LAL method
<b>PURITY:</b>	> 95% by SDS-PAGE
<b>SOURCE:</b>	HEK293 cells
<b>AMINO ACID SEQUENCE:</b>	Ser 22 to Ser 441 with C-terminal 6xHis Tag
<b>FORM:</b>	Lyophilized powder
<b>FORMULATION:</b>	Lyophilized from a 0.2 µm filtered solution of 20 mM PB, 150 mM NaCl, pH 7.2
<b>RECONSTITUTION:</b>	Reconstitute using sterile deionized water. Do not vortex.
<b>STORAGE CONDITIONS:</b>	Store lyophilized protein at -20 °C or -80 °C. Upon reconstitution, aliquot and store at -20 °C or -80 °C. Avoid repeated freeze-thaw cycles.
<b>DESCRIPTION:</b>	The GFRA2 receptor is a surface receptor attached to the cell membrane by a glycosylphosphatidylinositol linkage. GFRA2 is a receptor for glial cell line-derived neurotrophic factor (GDNF) and neurturin (NTN) and mediates activation of the RET receptor tyrosine kinase. GFRA2 is a candidate target for the study of RET-associated diseases.



Human CellExp™ GFRA2 / GDNFRB, Human Recombinant was loaded on SDS-PAGE and visualized using Coomassie Blue stain.

## RELATED PRODUCTS:

Phospho RET (Tyr1062) Antibody (Cat. No. A1978)  
 QuickDetect™ GDNF (Human) ELISA Kit (Cat. No. E4443)  
 GDNF Antibody (Cat. No. 5098)  
 GDNF, Human Recombinant (Cat. No. 4097)  
 Anti-RET Antibody (Cat. No. A1998)

**FOR RESEARCH USE ONLY! Not to be used on humans.**