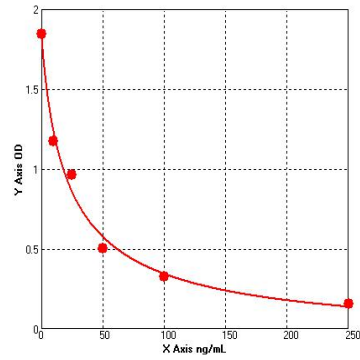


Data processing

	Con ng/ml	OD
A	0	1.843
B	10	1.174
C	25	0.963
D	50	0.504
E	100	0.327
F	250	0.159



Four parameter logistic curve regression

Formula: $y = (A - D) / [1 + (x/C)^B] + D$

A = 1.83728

B = 0.87931

C = 23.42591

D = -0.07414

$r^2 = 0.98988$

	Con ng/ml	OD
sp11	23.738672	0.876
sp12	12.660675	1.134
sp13	15.546824	1.052
sp14	20.973558	0.928